

Accumulator Load Valve SLV

Cover Plate NG 6, NG 10 • max. 315 bar • max. 30 respectively 60 l/min



Description

The WEBER-HYDRAULIK ValveTech accumulator load valve SLV is a shift valve with a pressure-dependent shifting point. The shift pressure is measured in port B. If the shift pressure is reached, the valve opens the connection from P to T, the pump is in pressure-free circulation. As soon as the pressure falls at port B to the reset point, the valve closes the connection of P to T, the accumulator will be loaded again. The reset pressure lies approx. 15% below adjusted shift pressure (= reset hysteresis). The SLV is available as a cover plate CETOP/ISO 3 (SLV 6) and CETOP/ISO 5 (SLV 10). The setting of the shift pressure can be done on demand. If the accumulator is fitted directly to the cover plate, devices with integrated check valve are available.

Technical Data

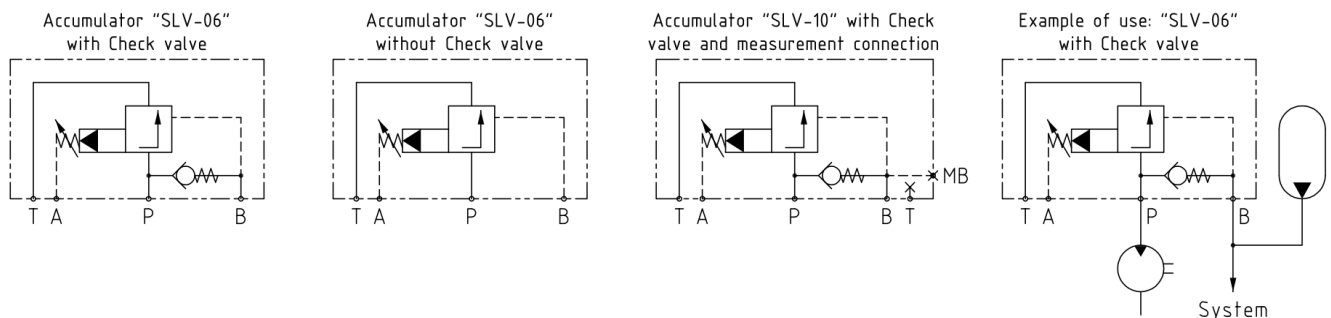
Hydraulic

Rated pressure: max. 315 bar
Switching pressure: see model code
Hysteresis: see model code
Rated flow: SLV 6: max. 30 l/min
SLV 10: max. 60 l/min
Fluids: Oils as per DIN 51524,
Others upon request
Viscosity: 3 – 400 cSt
Filtration: min. 25 µm

Mechanic

Design: pilot operated
Operation temperature: -20 °C – +80 °C
Installation: no restrictions
Weight: SLV 6: 1,3 kg;
SLV 10: 1,9 kg
Materials: valve parts: steel
body: aluminium
seals: NBR (Viton available)
back up rings: Teflon; PU
valve zinc plated
body anodised
Surface protection:

Symbols

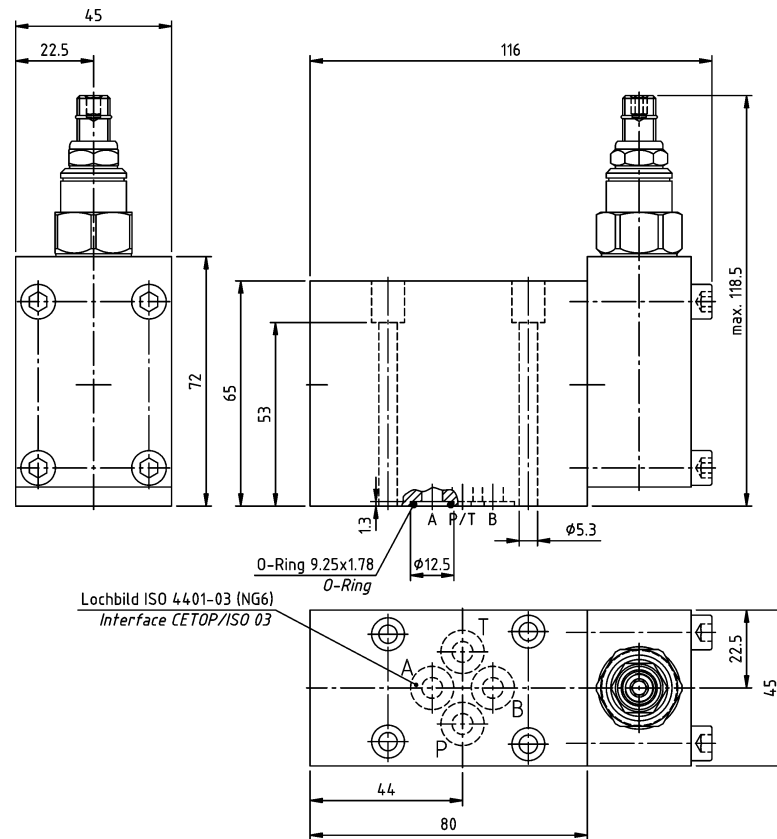


Model Code

SLV 6	-	210	-	15	-	3	-	RV
Accumulator Load Valve Surface Mount Body		Shift Pressure Range		Hysteresis		Design		Check Valve „P“ to „B“
Available options:		55 = 18 – 55 bar 105 = 35 – 105 bar 210 = 70 – 210 bar 350 = 140 – 315 bar		15 = 15% On request: 20 = 20% 30 = 30% 50 = 50%		internal		0 = without check valve RV = with check valve
NG 6		SLV 6						
NG 10		SLV 10						

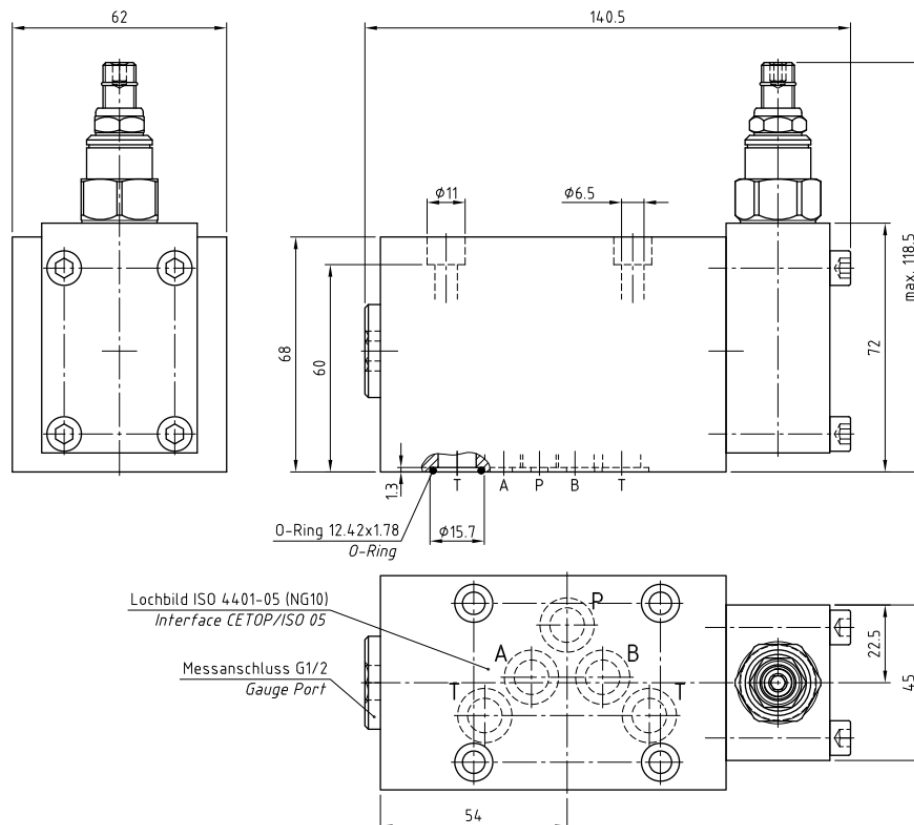
Dimensions [mm]

SLV 6 with / without Check Valve



HM3/071401

SLV 10



HM3/001401